



Until Help Arrives - What do you do?

Tenant Emergency Preparedness

Agenda

1. Tenant Preparedness

2. Floor Warden Teams

3. Key Responsibilities

4. Taking Charge

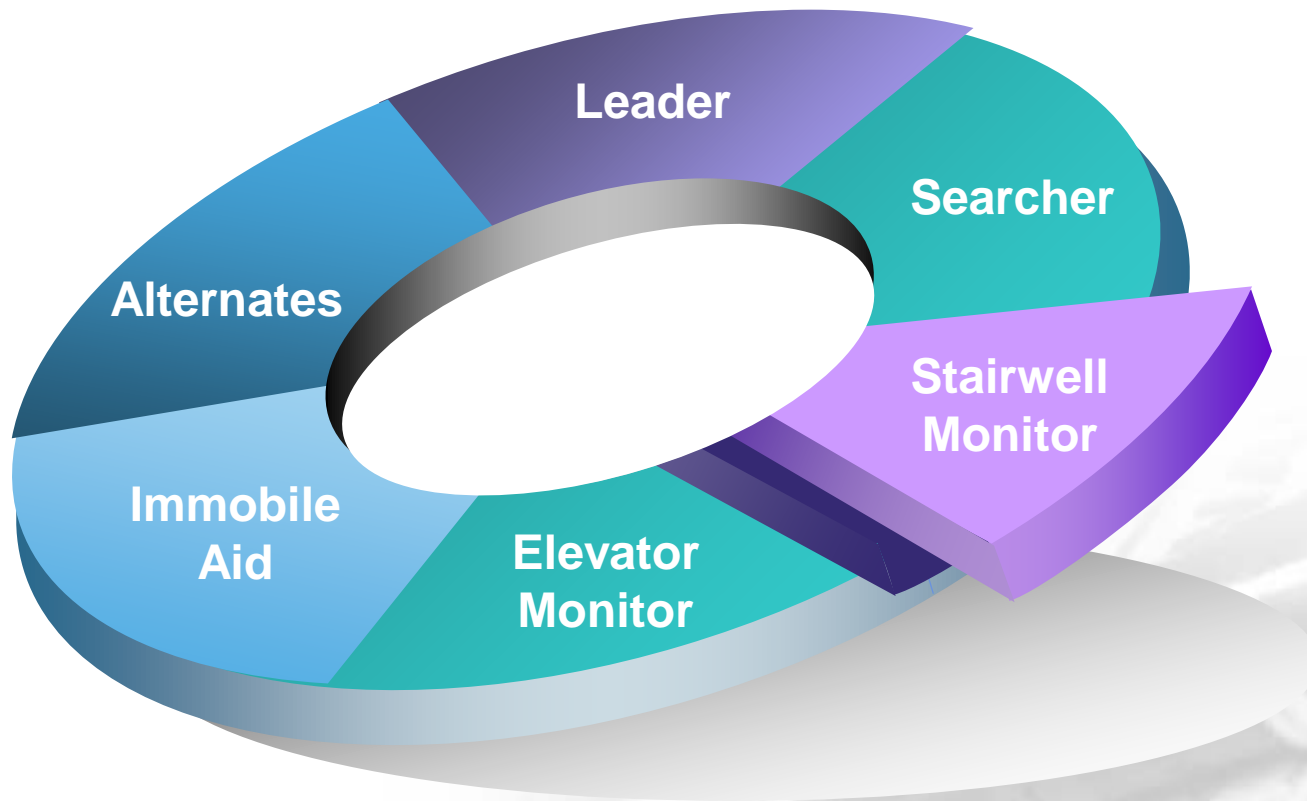
5. Active Shooter

6. Bomb Threat

What Would You Do?



Floor Warden Teams



Key Responsibilities

Response

Awareness

Communication

Decisions

Timing

A picture is worth a thousand words....



Start of office fire, visible smoke at ceiling level....



***Fire underway for 1.5 minutes, ceiling
blocked, black smoke has started to fill
area...***



Fire fully involved after 2 minutes. Notice flames on left side of slide. Emergency exit signs are blocked from view. Know your way out without these!



Fire, Life, Safety Systems



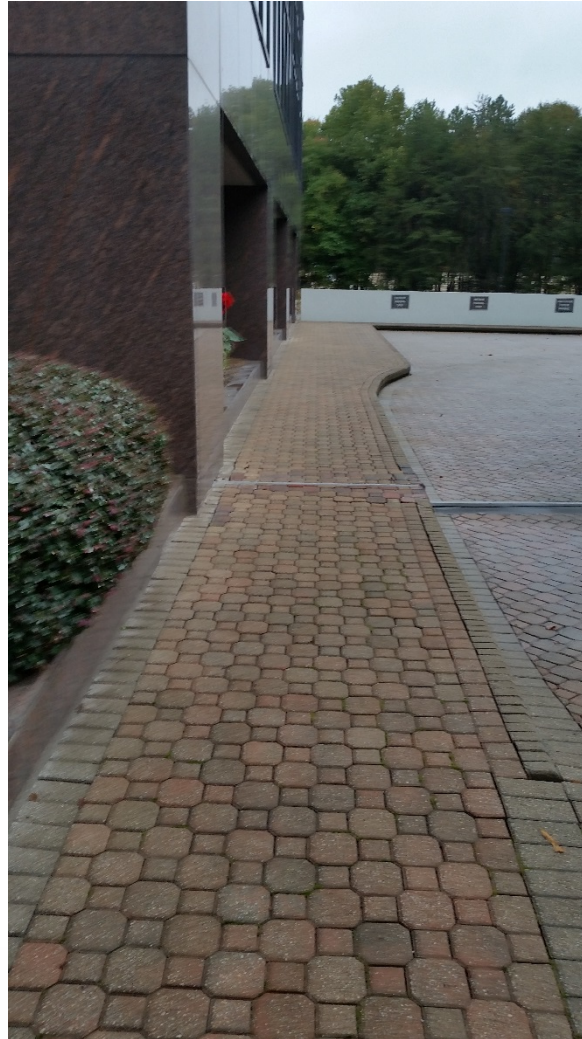
Stairwell Exit A



Stairwell A Exit



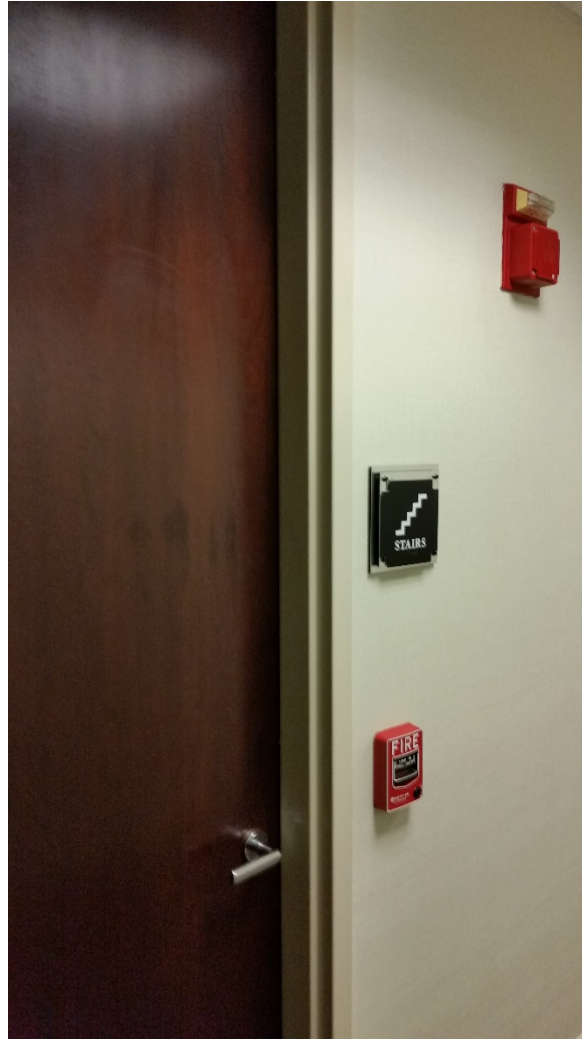
Walkway to Gathering Point



Stairwell A Gathering Point



Stairwell B Exit



Stairwell B Exit Route



Stairwell B Exit Route



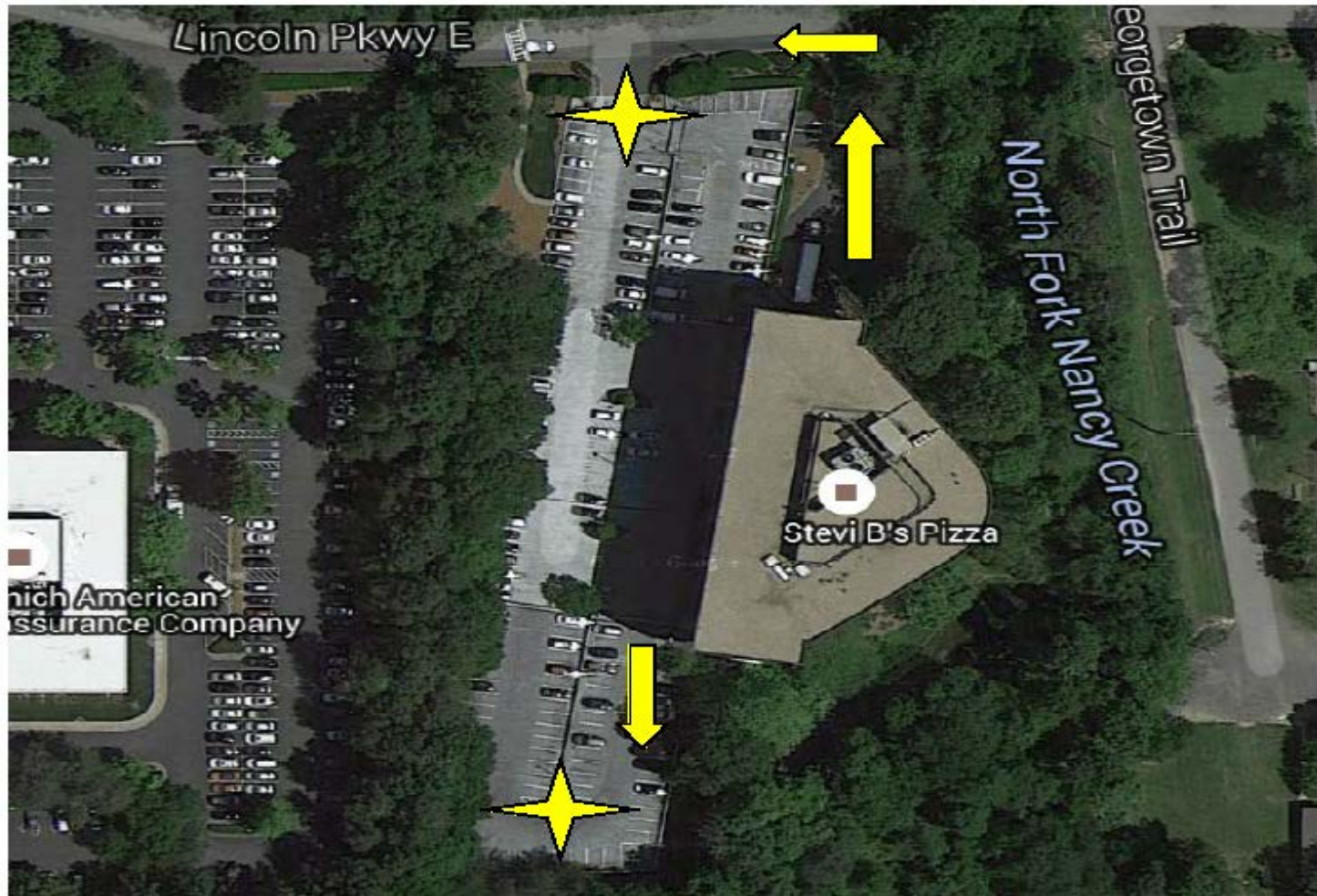
Stairwell B Exit Route



Stairwell B Gathering Point



Gathering Point



Miscellaneous Notes

- Sprinklers throughout the entire building.
- DO NOT BRING FOOD OR DRINKS IN THE STAIRWELL PLEASE!
- All elevators are recalled to the 1st floor during an alarm. Do not get on an elevator when alarm activates.

Immobile Tenants

- Immobile Tenants- Any tenant who is unable to evacuate on their own due to a number of circumstances:
 - Disability
 - Pregnancy
 - Broken Extremity
 - Etc.
- 2 Hour Rated Stairwells- You are able to remain in the stairwell safely for up to 2 hours

Immobile Tenants

- Each immobile tenant should have a partner assigned to them
- Partner should assist immobile tenant just inside the stairwell and wait with them
- Floor Warden will report all immobile tenants and partners location to Property MGMT (**Safety vests**) immediately as they exit the building
- Property MGMT will provide Fire Dept. with the location and count of each tenant still remaining in the building

Power Outages

Building Management will:

- Contact the utility company for information on duration and severity.
- Check for elevator entrapments.
- Order building evacuation if outage will be lengthy.
- Keep tenant contacts updated on status of power outage and repair.

Tornados or Severe Storm

- Do not use elevators.
- Move away from perimeter of building, closing doors behind you.
- Take cover in core area of building. Stay away from glass and surround yourself with walls. Core areas are restrooms, corridors and stairwells.
- Tune into local radio station for weather updates.
- Listen for building announcements and take necessary action.

Medical Emergency

- Call 911 relaying all pertinent information to dispatcher. Make sure to give building address, suite number and business name.
- Call Security Console: 770-396-2978
- Personnel can meet emergency responders in lobby....this helps reduce time to get to person with an emergency.
- Do not move the injured person unless a life-threatening hazard exists.

Active Shooter

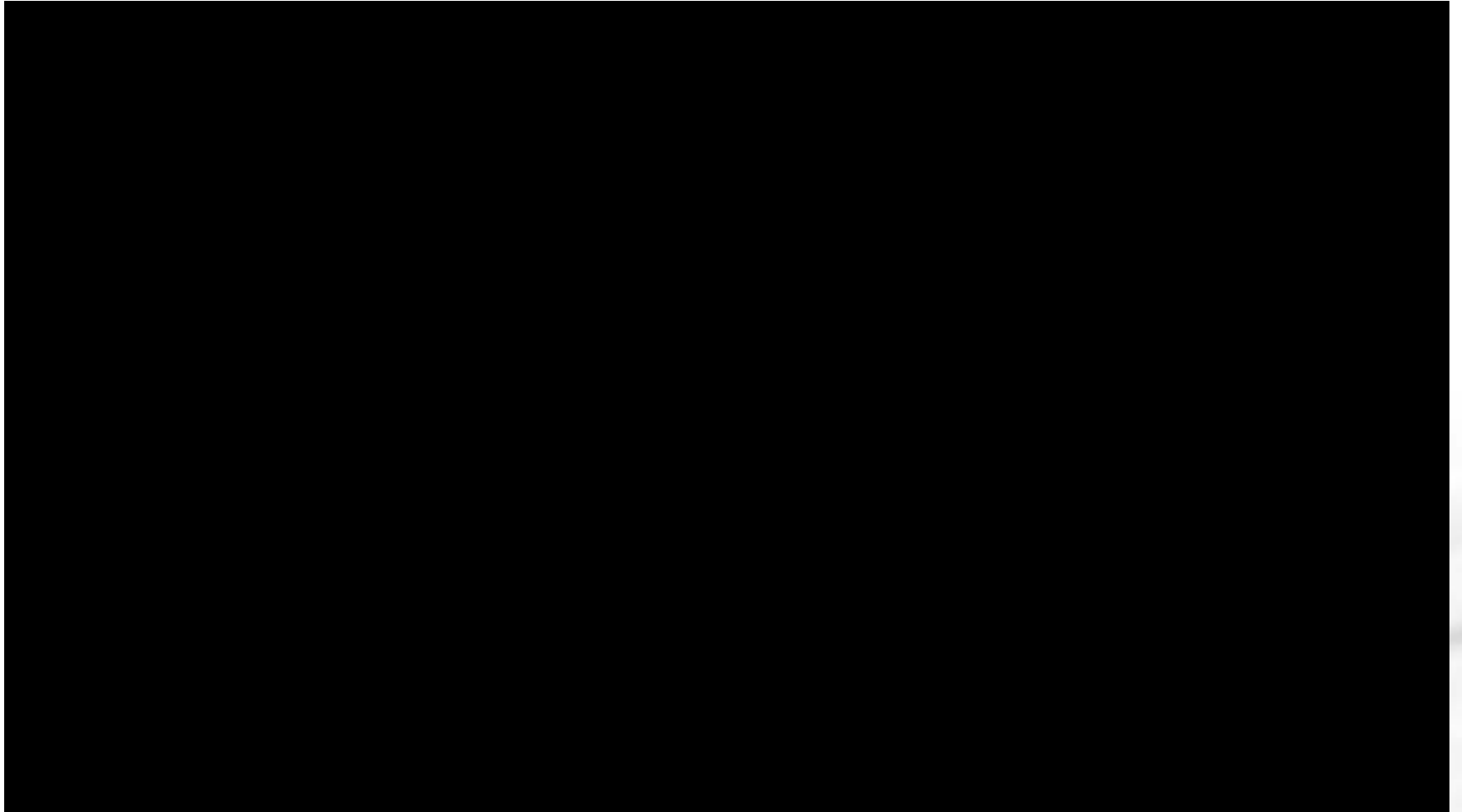
- What is an Active Shooter?
- Who could become an Active Shooter?
- What do you do if you're ever in an Active Shooter situation?
- Do you Run?
- Do you Hide?
- Do you Fight?
- **Do you pull the building fire alarm?**



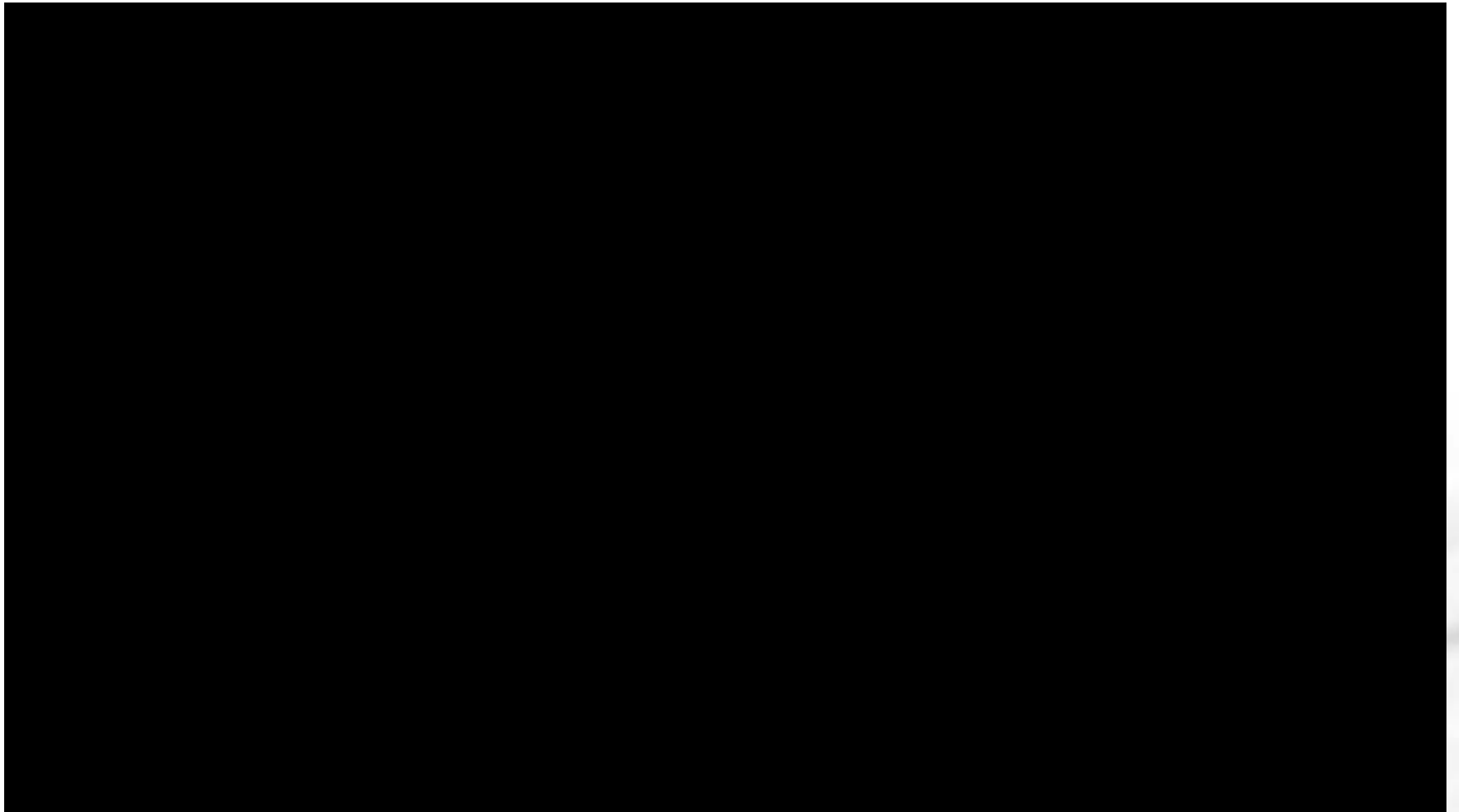
Active Shooter

**Never Ever Pull the
Building Fire Alarm
During an Active
Shooter Event!!!**

What Would You Do?



Bomb Threat Method



Safety Tip: CALM

- **C** - Call 911 and Property Mgmt.
- **A** - Alert Co-Workers
- **L** - Listen for instructions
- **M** - Move to a safe area

****Remember...stay CALM****

1455 Lincoln Parkway

Thank You for Attending!

**Anthony Willis
Director of Security
SecurAmerica, LLC
awillis@securamericallc.com**

