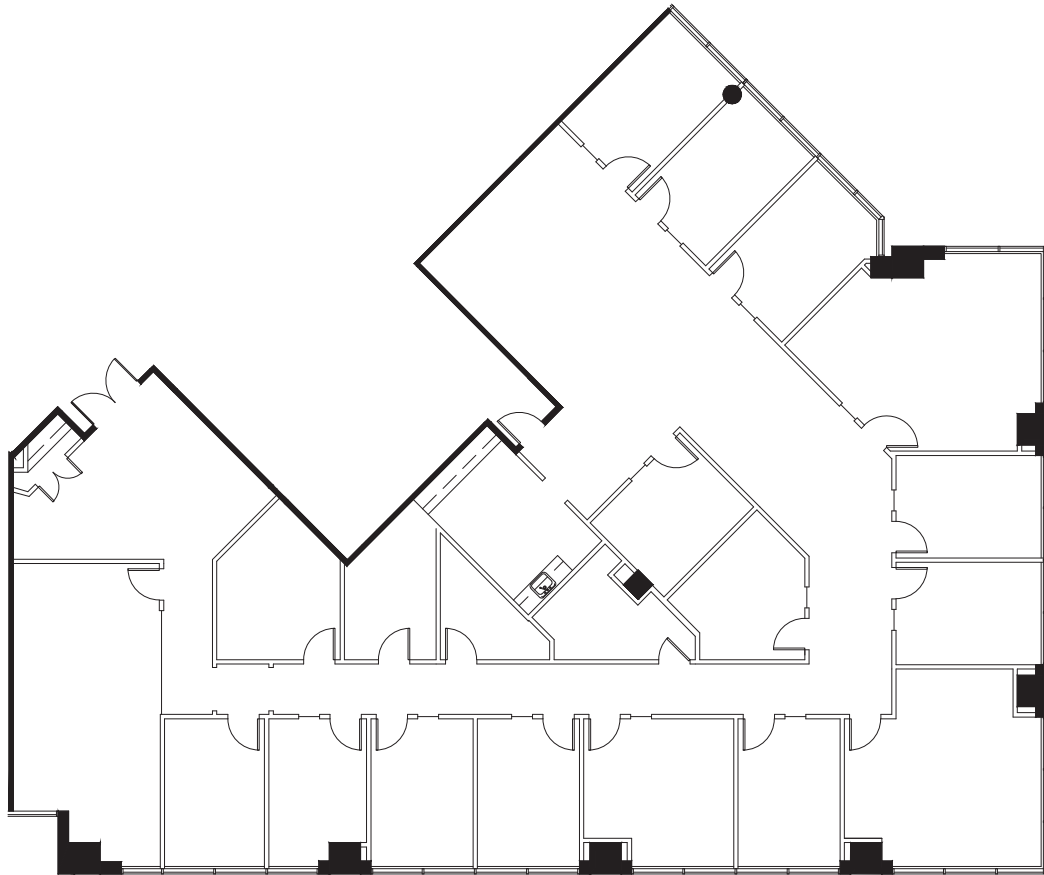


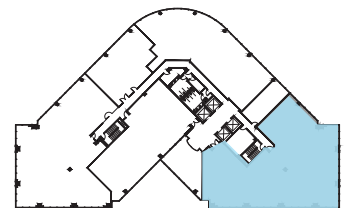
# 1455 LINCOLN PARKWAY

AT PERIMETER CENTER EAST

SUITE 350 | 6,396 RSF



KEY PLAN



FOR LEASING INFORMATION, PLEASE CONTACT:

**BRIAN HOWELL**

404.551.3334

Brian.Howell@foundrycommercial.com

**CHRIS HURD**

404.474.8044

Chris.Hurd@foundrycommercial.com

A PROPERTY OF:



PARMENTER.

**FOUNDRY**  
COMMERCIAL

3520 Piedmont Road NE, Suite 360

Atlanta, GA 30305

foundrycommercial.com