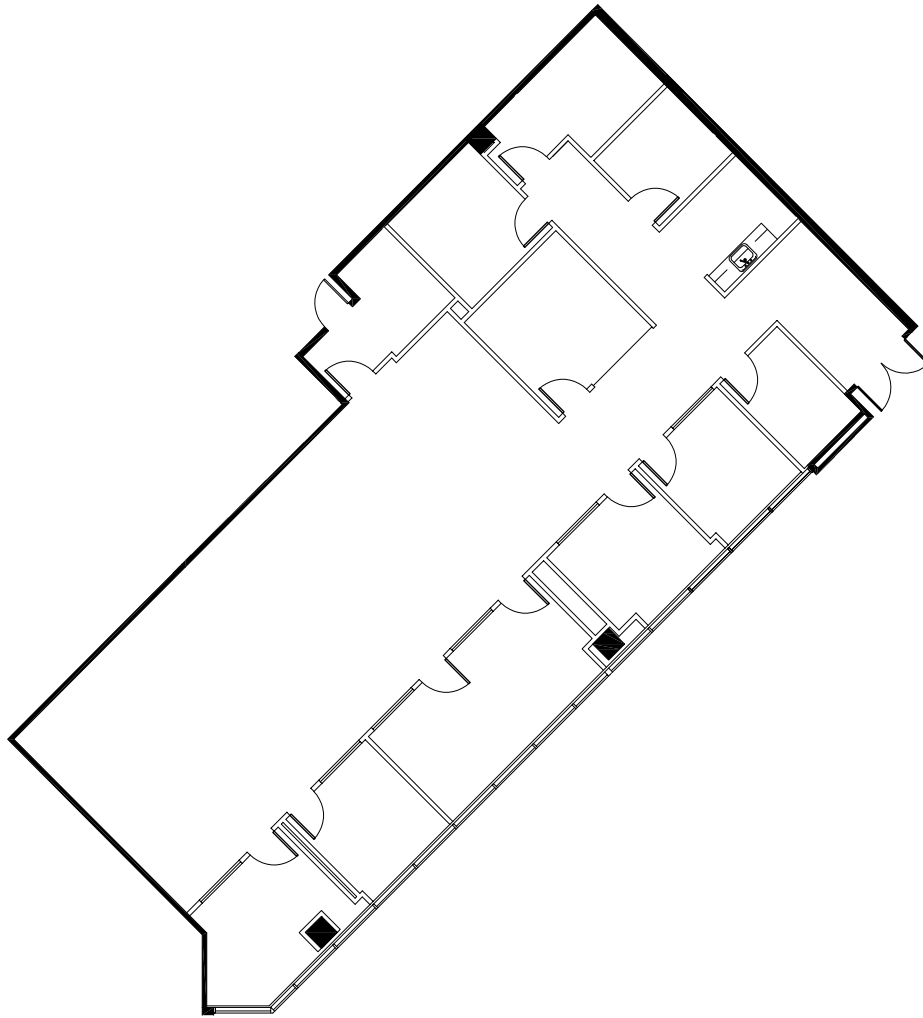


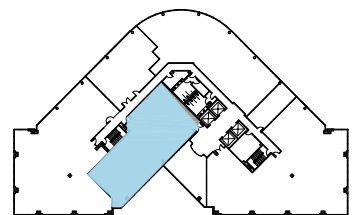
1455 LINCOLN PARKWAY

AT PERIMETER CENTER EAST

SUITE 315 | 3,680 RSF



KEY PLAN



FOR LEASING INFORMATION, PLEASE CONTACT:

BRIAN HOWELL

404.551.3334

Brian.Howell@foundrycommercial.com

CHRIS HURD

404.474.8044

Chris.Hurd@foundrycommercial.com

A PROPERTY OF:



PARMENTER.

FOUNDRY
COMMERCIAL

3520 Piedmont Road NE, Suite 360

Atlanta, GA 30305

foundrycommercial.com